

# West Lake Middle School

"Showing our Wildcat PRIDE in all that we do!"



# Welcome to West Lake!

## About Our School

- ✗ West Lake is a multi-track year round school in Apex, NC.
- ✗ Currently we have 1,200 students.
- ✗ We have the pleasure of working with students from over 30 different elementary schools in WCPSS and bring them together as one school community.



We believe in....  
"Moving ALL  
Wildcats Forward,  
Onward and  
Upwards to Ensure  
Success Each and  
Every Day"



# Welcome to West Lake!

## Rising 6th Grade Orientation

- ✕ Introductions
- ✕ General Overview of West Lake
- ✕ West Lake Middle School Classes
- ✕ Registration Overview
- ✕ School Tours



# Welcome to West Lake!

## What's New in Middle School?

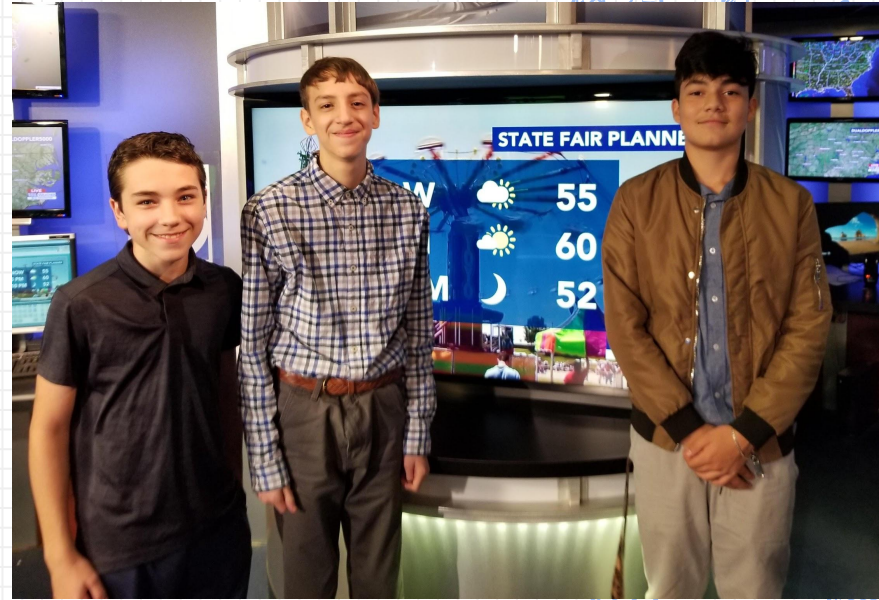
- ✗ Grading/Grading Scale
- ✗ Switching classes/Multiple Teachers
- ✗ Daily PE/Healthful Living
- ✗ Electives
- ✗ Increased Independence



# Our approach....

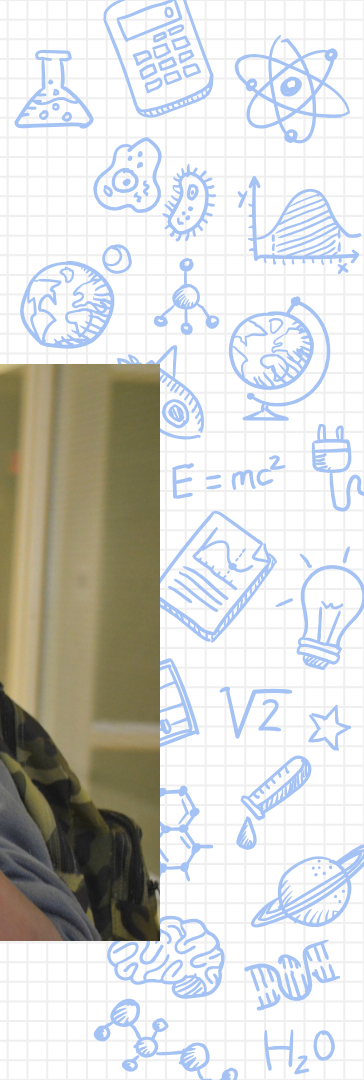
- ✗ Exploring the 4C's
- ✗ Standards Based Teaching
- ✗ Social Emotional Learning
- ✗ Equity

We believe that all students want to be successful, and it is our job to help them find the right tools.



# Daily Schedule

- \* School starts at 7:40 am and ends at 2:25 pm (Students may enter the building at 7:10 am.)
- \* 8 period day:
  - ◆ 4 Core Classes - Language Arts (ELA), Math, Science and Social Studies
  - ◆ 1 Elective class Physical Education



# SMART Block

---

- \* Used to reteach, provide additional assistance or enrich students on current content.
- \* All teachers participate and plan lessons.
- \* Teachers may prioritize students for specific subject days (to reteach, practice, enrich or complete missing work).
- \* Student Options:
  - ◆ Stay with core teachers
  - ◆ General location for silent reading
  - ◆ General location for study hall
  - ◆ Media Center for group projects and independent work
  - ◆ Elective or PE classes

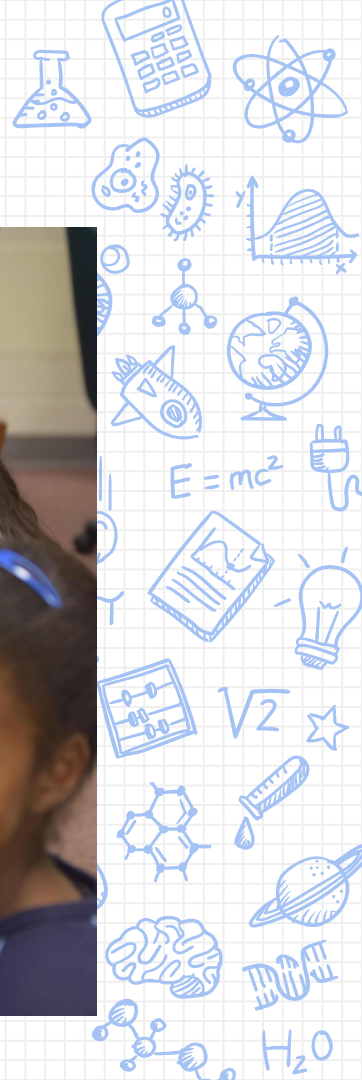




# Grading Scale

\* WCPSS uses a 10 point grading scale in Middle School

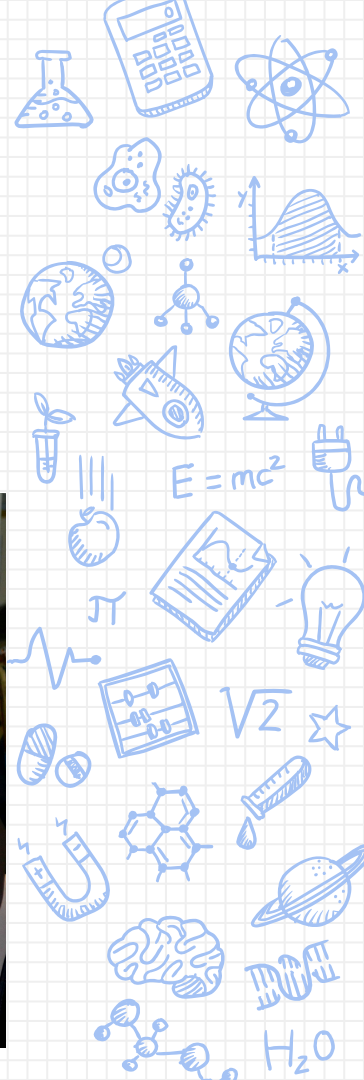
- ◆ A= 90-100
- ◆ B= 80-89
- ◆ C= 70-79
- ◆ D= 60-69
- ◆ F= 59 & below



# How are grades at WLMS determined?

---

- \* 40% Major Assessments
  - ◆ Unit Tests, Projects, Papers, etc.
- \* 30% Quizzes
- \* 20% Classwork
- \* 10% Homework
  
- \* PLT Decisions
- \* Teachers will communicate



-



- 

-



West Lake offers after school clubs for students in all grade levels. We offer a wide variety of clubs that address many different interest levels so all students can engage and explore.

7th and 8th graders are invited to try-out for sports during the Fall, Winter and Spring Seasons. 6th graders are invited to be managers for sports that they are interested in supporting.

# Positive Behavior Intervention Support (PBIS)

- \* Promoting and recognizing positive behaviors and expectations
- \* Positively teaching and reteaching procedures and routines

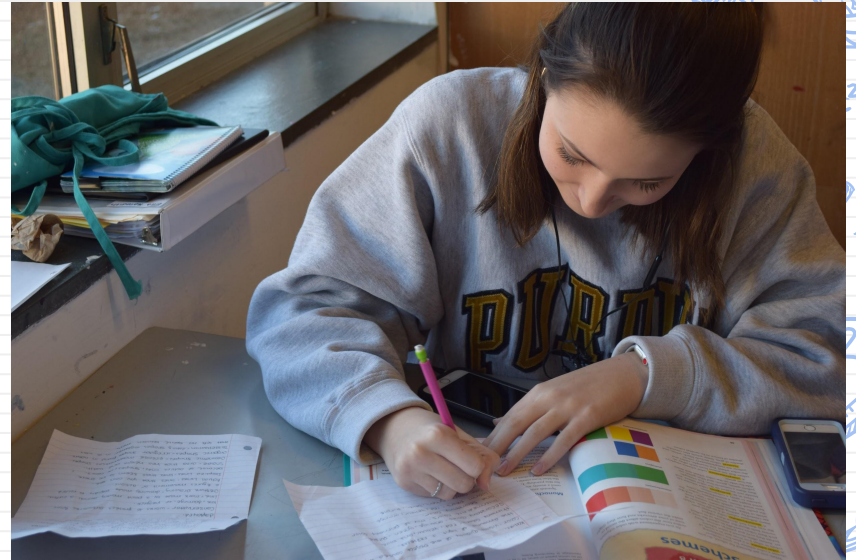
## PRIDE:

- \* Perseverance
- \* Respect
- \* Integrity
- \* Dedication
- \* Excellence



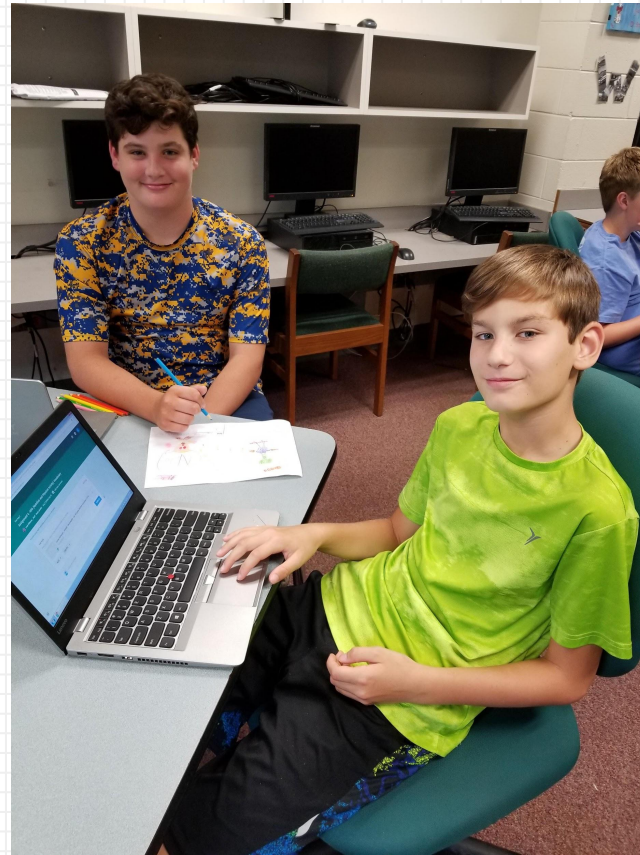
# Student Services Resources

- \* One counselor on each grade level hallway
- \* Psychologist and Social Worker at WLMS
- \* Crisis, small group counseling, academics, peer relationships, 504 advising, scheduling and attendance monitoring.
- \* Proactive versus Reactive
- \* Feel free to reach out to any of the counselors at any time.





# Registration Process at West Lake Middle School





## Rising 6th Grade Registration

---

- \* Elementary Counselors will help your child register for classes through Home Base/Powerschool.
  - ◆ Choose from the list of electives for WLMS.
  - ◆ List your child's elective choices in the spaces provided.
  - ◆ Primary Electives are your top 2 choices.
  - ◆ Also list 3 alternative electives.
- \* Follow procedures established at your elementary school.
- \* <https://westlakestudentservices.weebly.com/> - Click counselor's website.





# 6<sup>th</sup> Grade Elective Options

---

- \* Beginning Band (Year Long)
- \* Visual Art and Music Exploratory
- \* Beginning Spanish & Keyboarding Exploratory
- \* Exploring Interpersonal Relationships- Childcare
- \* Project Revive
- \* Digital Literacy/ Keyboarding





# School Supplies

\*Linked on the school website under team information.

\*Will be available in June for your reference.  
[westlakems.wcpss.net](http://westlakems.wcpss.net)



# Updates Coming in 2019...

Our building has been going through different updates this school year to better support students in the upcoming years.

- ✕ New Technology
- ✕ New Classroom Furniture
- ✕ New Collaboration Pods
- ✕ New Roof
- ✕ New Fire Alarm System.



# Our School Website

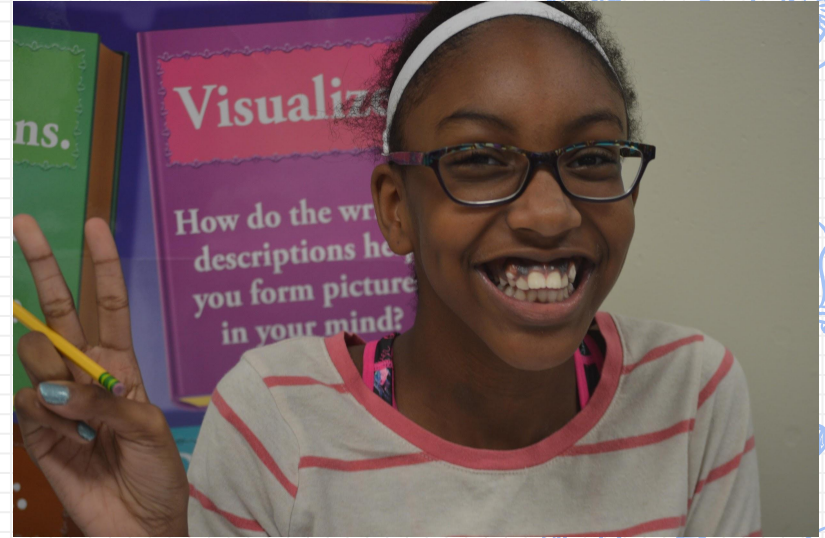
- \* Student/Parent Handbook
- \* Academic Resources
- \* Team/Teacher Websites
- \* Behavioral Expectations (PBIS)
- \* Homework Expectations
- \* Attendance Policy & Plan
- \* Grading Plan
- x [westlakems.wcpss.net](http://westlakems.wcpss.net)
- x Twitter: @WLMS\_Wildcats
- x Additional communication through Weekly Announcements. (Be sure to check your student's data sheet for correct, updated information.)



# PRIDE Camp

---

- \* Friday, July 6, 2019 -  
Tracks 1, 2 and 3
- \* Friday, July- Track 4
- \* Student Sessions
  - Meet teachers/Team Building
  - Get acquainted with the school and new schedule.
- \* Parent Sessions
  - Registration
  - Wildcat Gear
  - Information Sessions



#BETHEONE



2018-19 WLMS ADMINISTRATIVE TEAM

## Contact Us

Feel free to reach out with any questions you may have, and follow us on Twitter to see what we are exploring in and out of our classrooms!

- ✕ Mrs. Adkins- [aadkins@wcpss.net](mailto:aadkins@wcpss.net)
- ✕ Phone: 919-662-2900
- ✕ Website: [www.westlakems.wcpss.net](http://www.westlakems.wcpss.net)
- ✕ Twitter: @WLMS\_Wildcats